



LIMITED

T-34



T-34

Limited

Service Manual



IMPORTANT

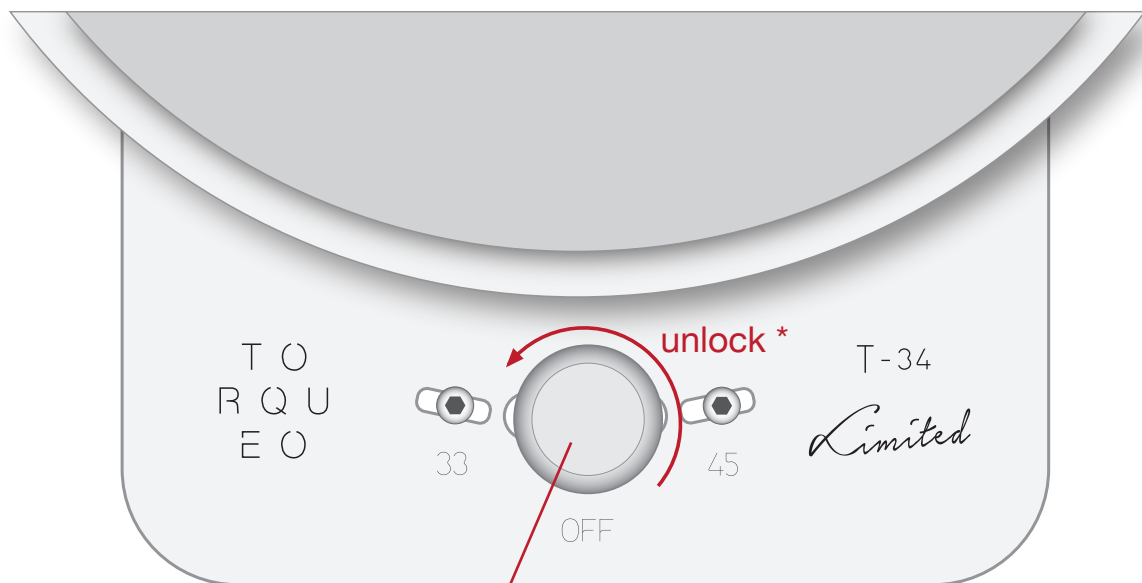
It is recommended to turn on the TT at least 20 minutes before starting to listen to music.

This will allow you to get a better listening of your vinyls.

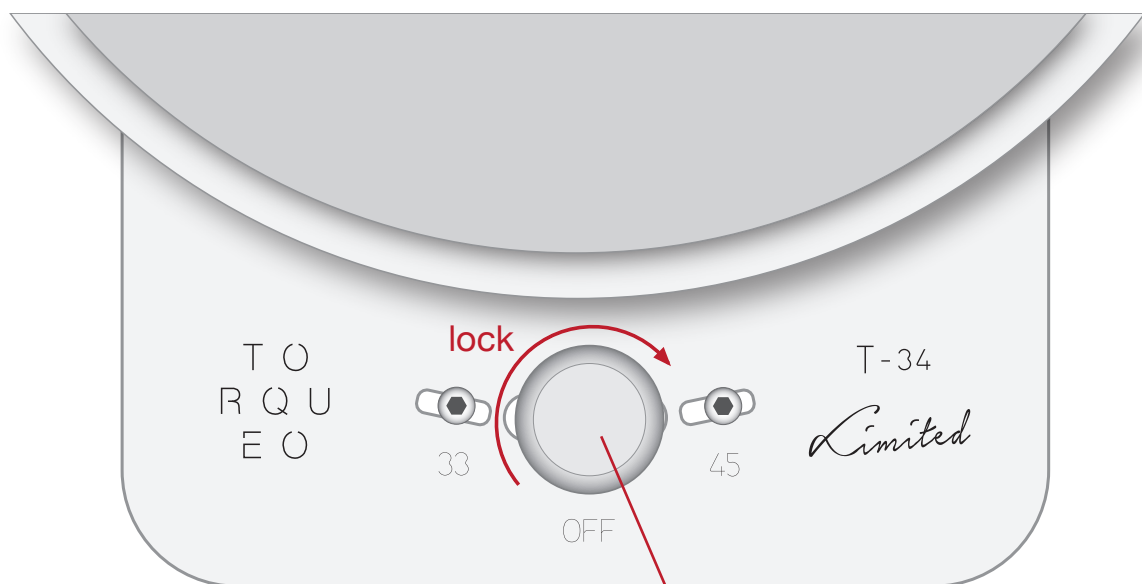
It is also advised not to switch off the TT every time the vinyl is changed.

You can change the vinyl, while the TT is rotating.

In order to achieve greater reproduction quality.

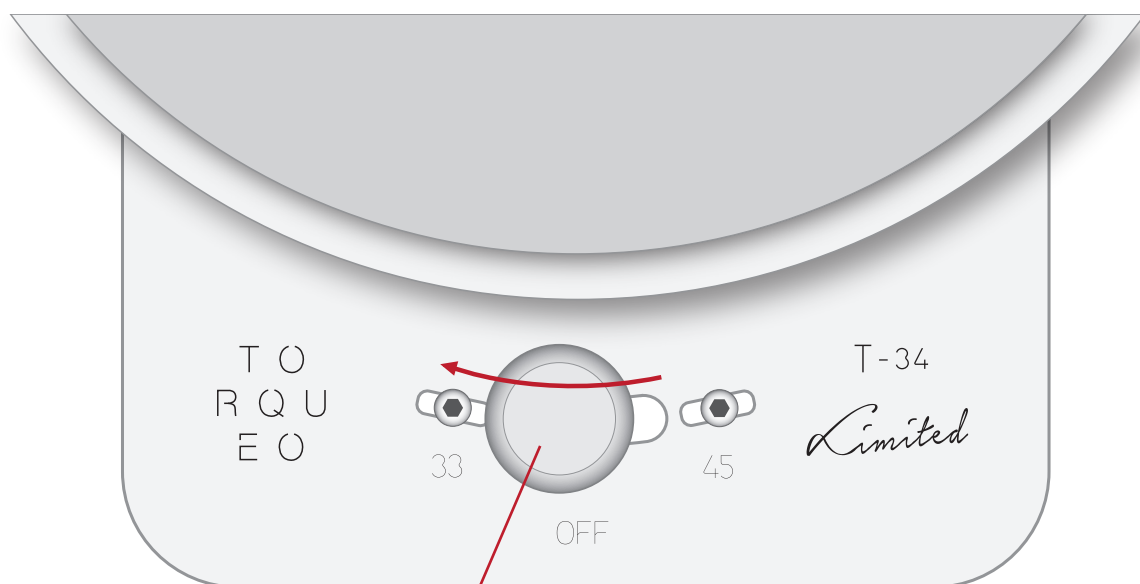


KNOB

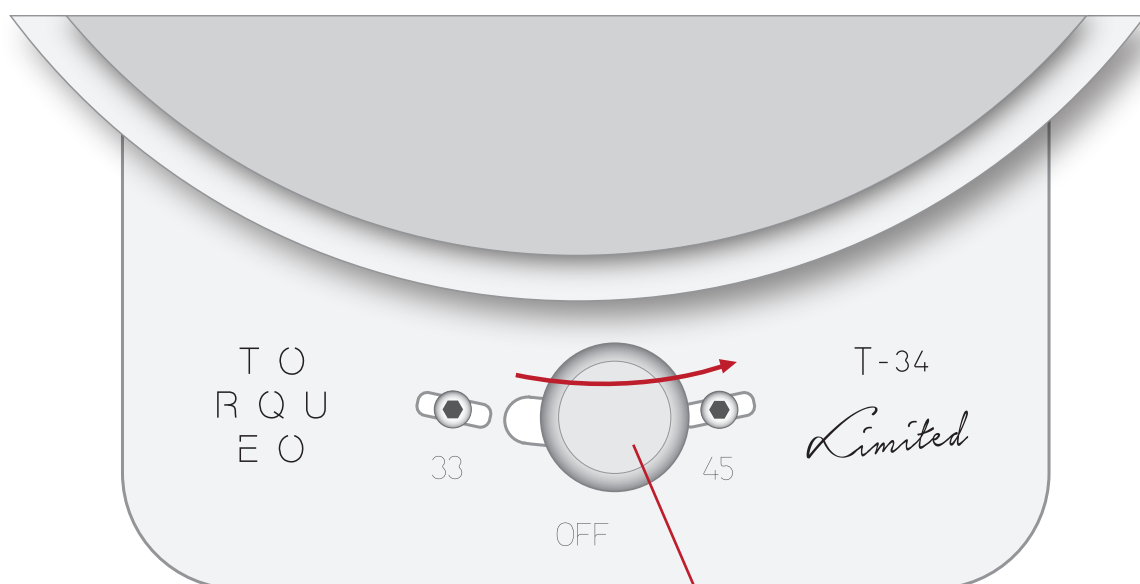


KNOB

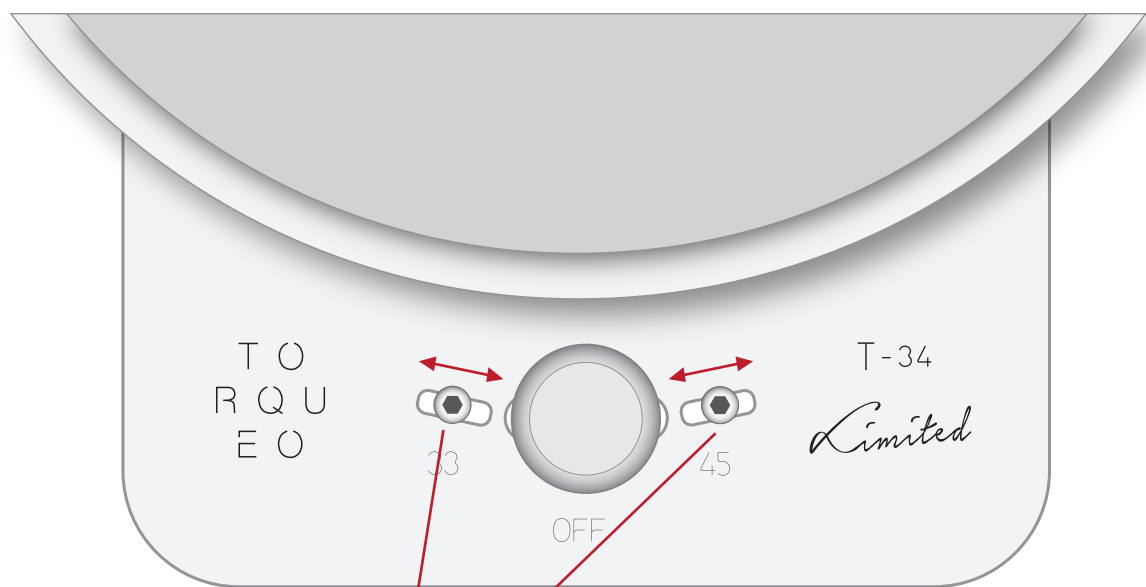
* (do not unscrew completely)



for 33rpm speed



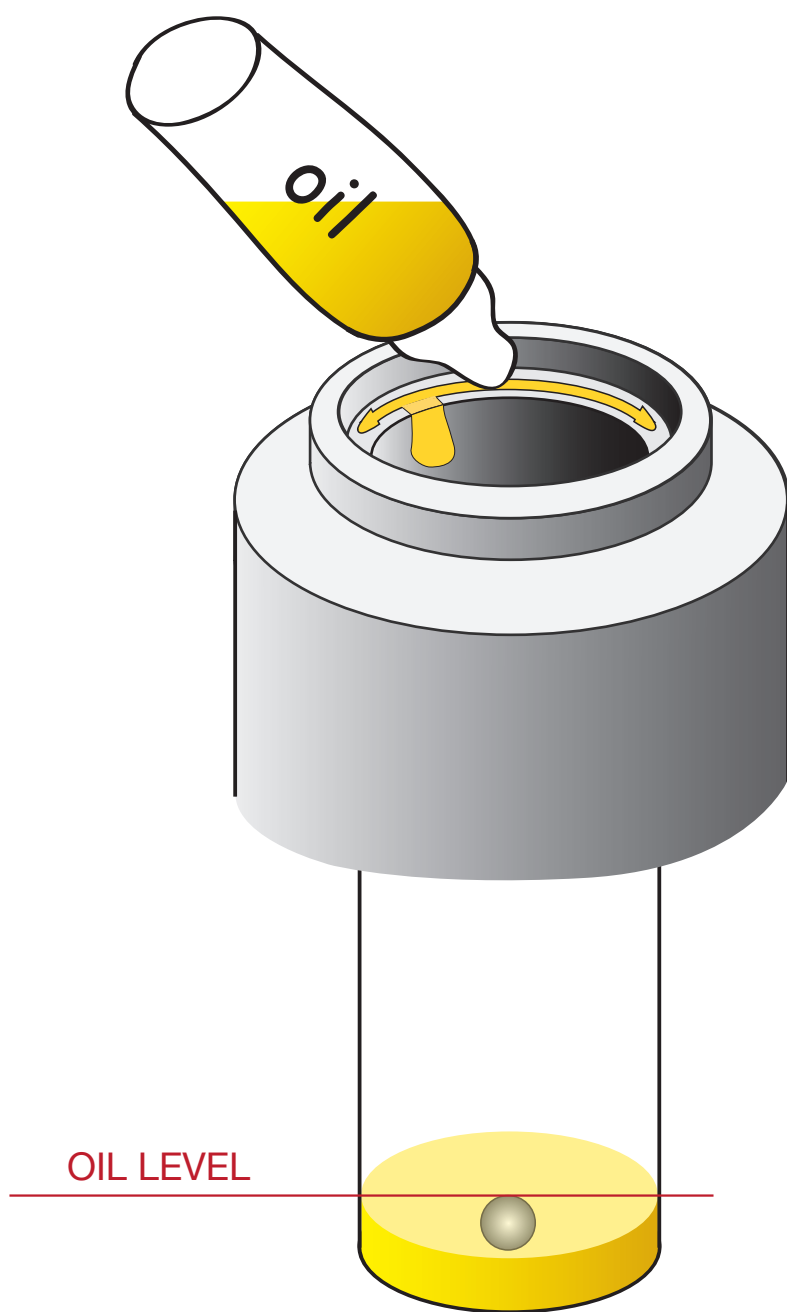
for 45rpm speed

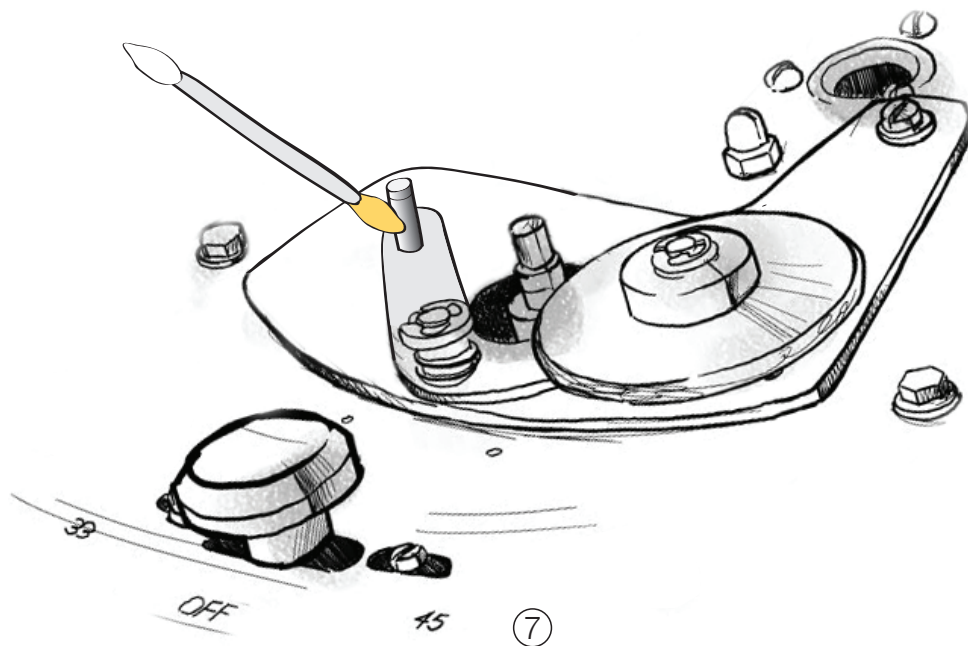
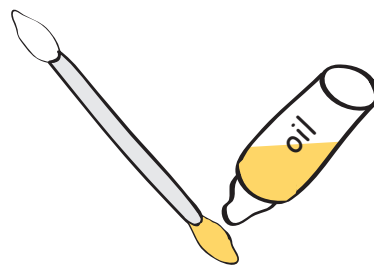
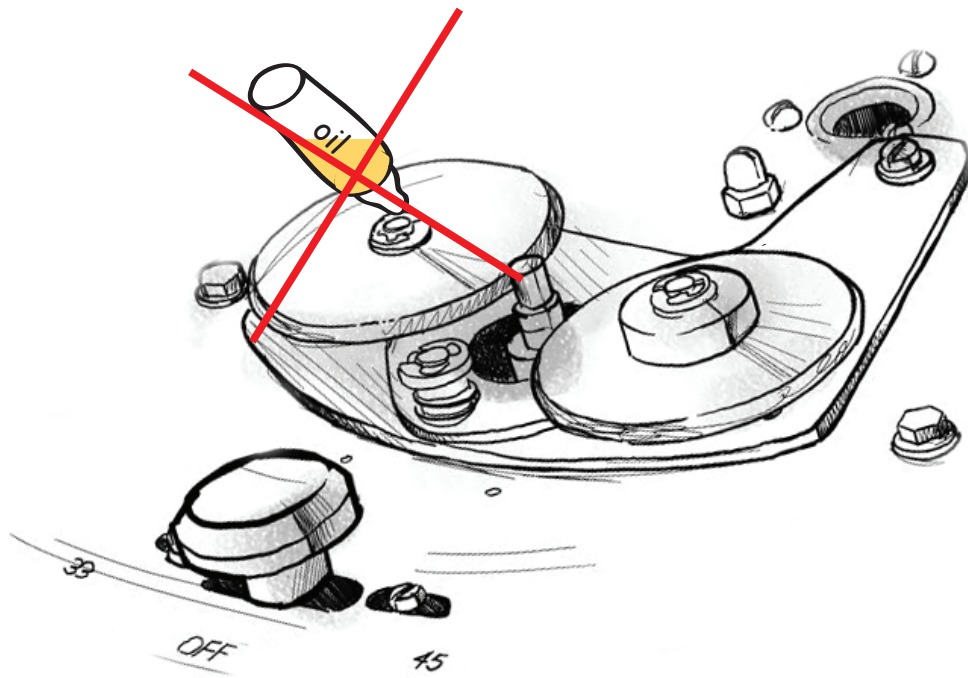


LIMIT SWITCH BOLT FOR THE KNOB

- 1) unlock the bolt *
- 2) adjustment the knob for perfect speed
- 3) lock the bolt

* (do not unscrew completely)







ABOUT US

We started developing a pulley operated record player for personal use, since those produced in the past didn't fully satisfy our requirements. Once completed the study of mechanical systems and materials able to satisfy our expectations, we started the design phase of high precision mechanisms and a Plinth able to exalt the pulley system reproduction quality and to host any arm of new or old production. Each Torqueo record player is a unique piece; this allows us to pay careful attention to the finishing and precise tuning of the mechanism. We are glad because our daily job is also our passion. We try to satisfy ourselves looking for the music's soul and enjoying the process. Music has always been a reward of our job.

OUR PHILOSOPHY

The philosophy of Torqueo Audio is to consider the record player a musical instrument, therefore, our principle is simple: "Harmonise material and technique" In fact, the mix of materials and architecture, combined with technical criteria, creates the desired sound result. Our aim is to give the listener the emotional content of music, rejecting the current Hi-End trends that mortify the musicality of the sound message. It will never be the right sound if you first used to hear good live music. But it's only few people who have this opportunity. Often you accept the convenience of digital instead of looking for the quality of the original recording. When we make a turntable, we want it sounds in an extraordinary way. This is not about an insane passion for the 'hi-fi': it's about getting closer to what musicians express during the recordings.

www.torqueo-audio.it
info@torqueo-audio.it





SPECIFICATIONS

Power supply	230V~(50/60Hz) / 120V~(50/60Hz)
Power consumption	35W
External dimensions	370(W) x 290(H) x 450(D) mm
Net weight	45kg

TO NEARM BASE

Pilastro Limited	
External dimensions	220~290(H) x 170(D) mm
Net weight	12,5kg

